

**CARROLL COUNTY COALITION  
FOR PUBLIC HEALTH**  
An Initiative of Granite United Way

**Public Health Advisory Council (PHAC) Annual Meeting**

Monday, September 23rd, 2019  
Camp Calumet Conference Center,  
Freedom, NH

**AGENDA:**

- 9:00-9:20am: Registration, Networking, Light Breakfast**
- 9:20-9:30am: Welcoming Remarks:**  
Carroll County Coalition for Public Health Staff
- 9:30-9:50am: State of Public Health in Carroll County**  
Caleb Gilbert  
Public Health Advisory Council Coordinator  
Carroll County Coalition for Public Health
- 9:50-10:45am: Updates from our County's Hospitals**  
Jeremy Roberge  
President & Chief Executive Officer, Huggins Hospital  
  
Arthur Mathisen  
President, Memorial Hospital
- 10:45-11:00am: Break**
- 11:00-noon: Financial Wellbeing and its Role in Overall Health**  
Cary Gladstone  
Senior Director of Asset Building Strategies  
Granite United Way
- Noon-1pm: Lunch and Networking Time**
- 1:00-2:00pm: Community Lead Discussion**  
Gail Gettens  
Health Promotion Advisor and Child Development Specialist  
Healthy Homes and Lead Poisoning Prevention Program, NH DHHS

Event materials can be accessed at [www.c3ph.org](http://www.c3ph.org)

*Carroll County Coalition for Public Health*

*Carroll County  
Public Health Advisory Council  
(PHAC) Annual Meeting*

*Caleb Gilbert, C3PH PHAC Coordinator  
Camp Calumet, West Ossipee, NH  
Monday, September 23, 2018*

**CARROLL COUNTY COALITION  
FOR PUBLIC HEALTH**  
An Initiative of Granite United Way

**Thank You to Our Event Sponsors!**



# Agenda

- 9:00-9:20am: Registration, Networking, Light Breakfast**
- 9:20-9:30am: Welcoming Remarks**
- 9:30-9:50am: State of Public Health in Carroll County**
- 9:50-10:45am: County Hospitals**
- 10:45-11:00am: Break**
- 11:00-12:00pm: Financial Stability & SDOH**
- 12:00-1:00pm: Lunch**
- 1:00-2:00pm: Lead Presentation**

# Carroll County Coalition for Public Health

*The mission of the Carroll County Coalition for Public Health (C3PH) is to promote, protect, and improve the health and well-being of communities within Carroll County, New Hampshire through the proactive, coordinated, and comprehensive delivery of essential public health services*

## Our Staff

- **Caleb Gilbert:** *Public Health Advisory Council (PHAC) Coordinator*
- **Terri Fraser Hooper:** *Medical Reserve Corps Volunteer Coordinator*
- **Jeff Jones:** *Public Health Emergency Preparedness Coordinator*
- **Jennifer Selfridge:** *Prevention Resource Coordinator*
- **Catalina Kirsch:** *Continuum of Care Facilitator*

## Subcontracted Partner

- **Schelley Rondeau, Central NH VNA:** *School-based Flu Clinics & Young Adult Services*



State of Public Health in Carroll County:

*Summary of Accomplishments*  
*2018-2019*

# Early Childhood and Early Parental Support

---

- Carroll County Early Childhood Coalition
- Preschool Development Grant with Children Unlimited
- Kindergarten Readiness Event
- “Resilience Screening”

# Access to Comprehensive Behavioral Health Services

## (Continuum of Care for Substance Use Disorder and Mental Health Services)

---

- “Carroll County Responds” Community Workgroup
- IDN Region 7
- Young Adult Training
- Doorway New Hampshire



# Substance Misuse and Addiction

---

- Youth Leadership Summit
- Drug Take Back Day
- Wellness Committees
- “Recovery Boys” Screening

# Chronic Disease

---

- “100 Days of Wellness”
- Community Health Needs Assessments
- Huggins Rural Health Network

# Aging with Connection & Purpose

---

- Gibson Center's Age-Friendly Community
- Advance Care Planning
- “Live Well, Die Well” Event
- Caregiver Expo

# Public Health Emergency Preparedness Across the Lifespan

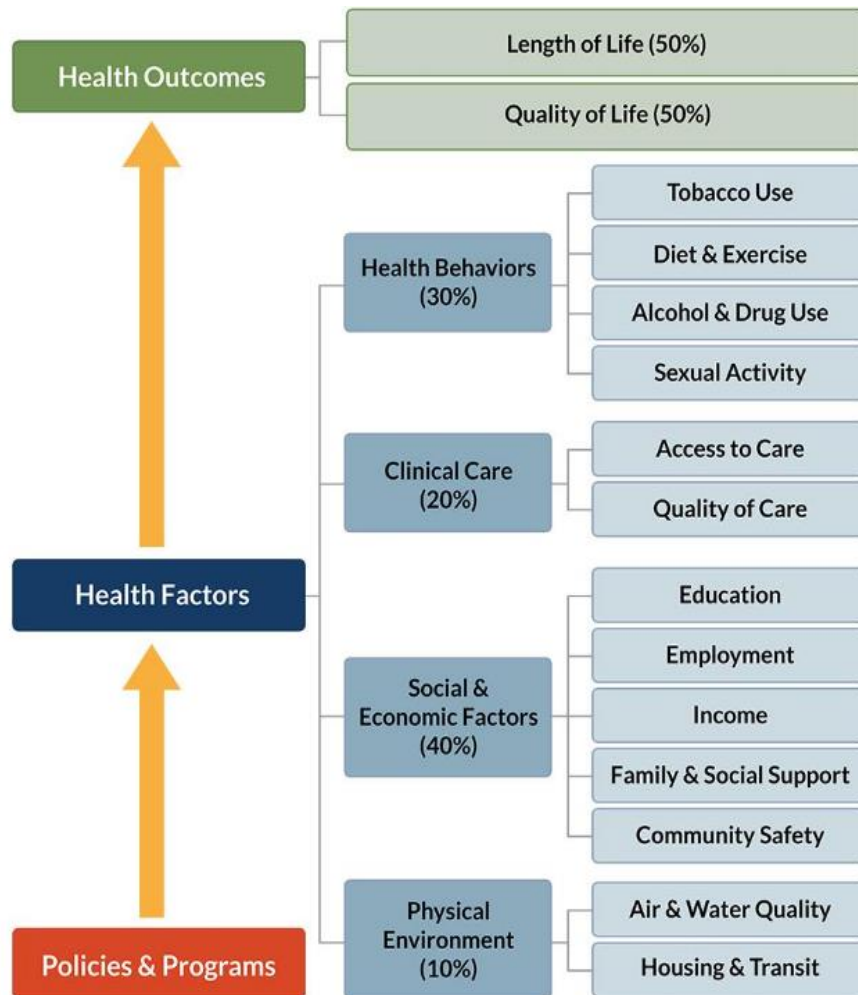
---

- Community Narcan Events
- School Based Flu Clinics
- Hepatitis A Response
- Citizen Corps
- Preparedness Across the County

# County Health Rankings Model of Population Health

(with C3PH Priority Areas)

<http://www.countyhealthrankings.org/app/new-hampshire/2017/rankings/carroll/county/outcomes/overall/snapshot>



County Health Rankings model © 2016 UWPHI

- Substance Misuse & Addiction
- Chronic Disease
- Access to Comprehensive Behavioral Health Services
- Early Childhood and Early Parenting Support
- Aging with Connection and Purpose
- Public Health Emergency Preparedness Across the Lifespan

## *For more information:*

*C3PH Office Location:*

*1230 Route 16, Ossipee, NH 03864*

*Phone: 603-301-1252*

*E-mail: [phac@c3ph.org](mailto:phac@c3ph.org)*

*Website: [www.c3ph.org](http://www.c3ph.org)*

## *Thank you to our Funding Partners:*



# CARROLL COUNTY COALITION FOR PUBLIC HEALTH

An Initiative of Granite United Way



a member of GraniteOne Health

# VISION, MISSION, VALUES

## VISION

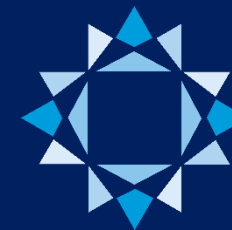
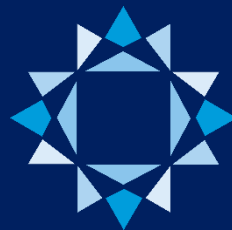
Huggins will be  
the community's home  
for health and wellbeing.

## MISSION

To empower the fulfillment of life  
through better health

## VALUES

Family – Compassion – Respect –  
Excellence – Continuous Improvement

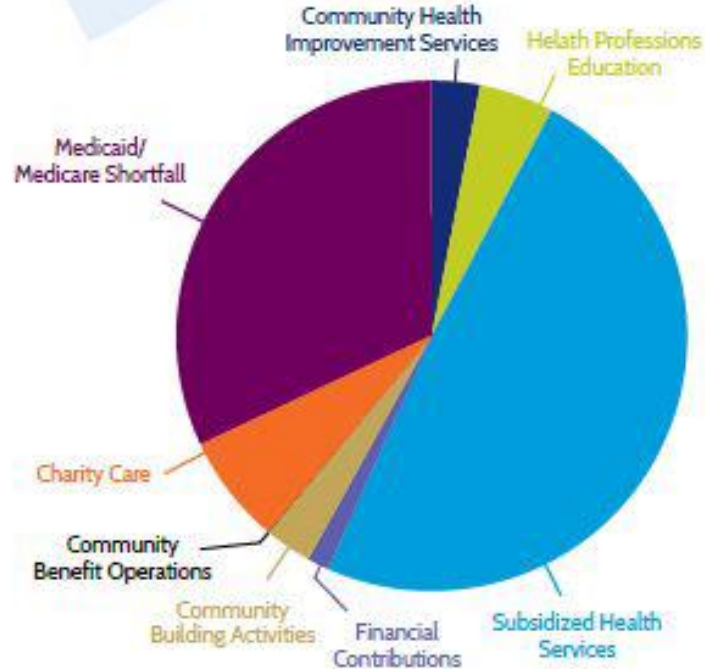




# Community Benefit

**\$7 MILLION +**

in benefits to our  
communities in Fiscal  
Year 2018.



Community Health Improvement Services .....	\$226,546
Health Professions Education ..	\$346,866
Subsidized Health Services ..	\$3,604,209
Financial Contributions .....	\$100,879
Community Building Activities ..	\$217,563
Community Benefit Operations ...	\$1,388
Charity Care .....	\$512,878
Medicaid/Medicare Shortfall .	\$2,359,002

- Huggins Hospital provided over **\$7 million in Community Benefits** in FY18, including services such as the Paramedic Intercept Program, Adult Day Program, Charity Care (free care) and support for other local non-profits.
- Huggins employs over **520 people** locally with locations in Wolfeboro, Moultonborough, Ossipee, Tamworth and Alton (hospital, medical offices and Back Bay Rehabilitation).
- Huggins supports more than **70 local businesses** by purchasing services or products, directing over \$1 million to those local businesses last year. Economists estimate our overall impact to the community to be **over \$100 million/year**.

*A Healthier Drive Thru*  
**FREE FLU SHOTS**

  
a member of GraniteOne Health

**DRIVE THRU**  
FLU SHOT CLINIC

**Oct. 8 & Oct. 10**  
10 AM - 2 PM    2 PM - 6 PM

Roll down your window,  
and roll up your sleeves.  
Just drive up and let  
Huggins serve you,  
right in your car!

Enter the Drive Thru Flu Shot Clinic by turning  
onto Christian Ridge Road in Wolfeboro and  
follow the signs. Visit [www.hugginsevents.org](http://www.hugginsevents.org).

*Drive Thru flu shots are for age 18+.*



**584 community members vaccinated  
at Huggins Hospital's  
Drive Thru Flu Shot Clinic  
in 2018**



# Huggins Hospital HIGHLIGHTS - growth



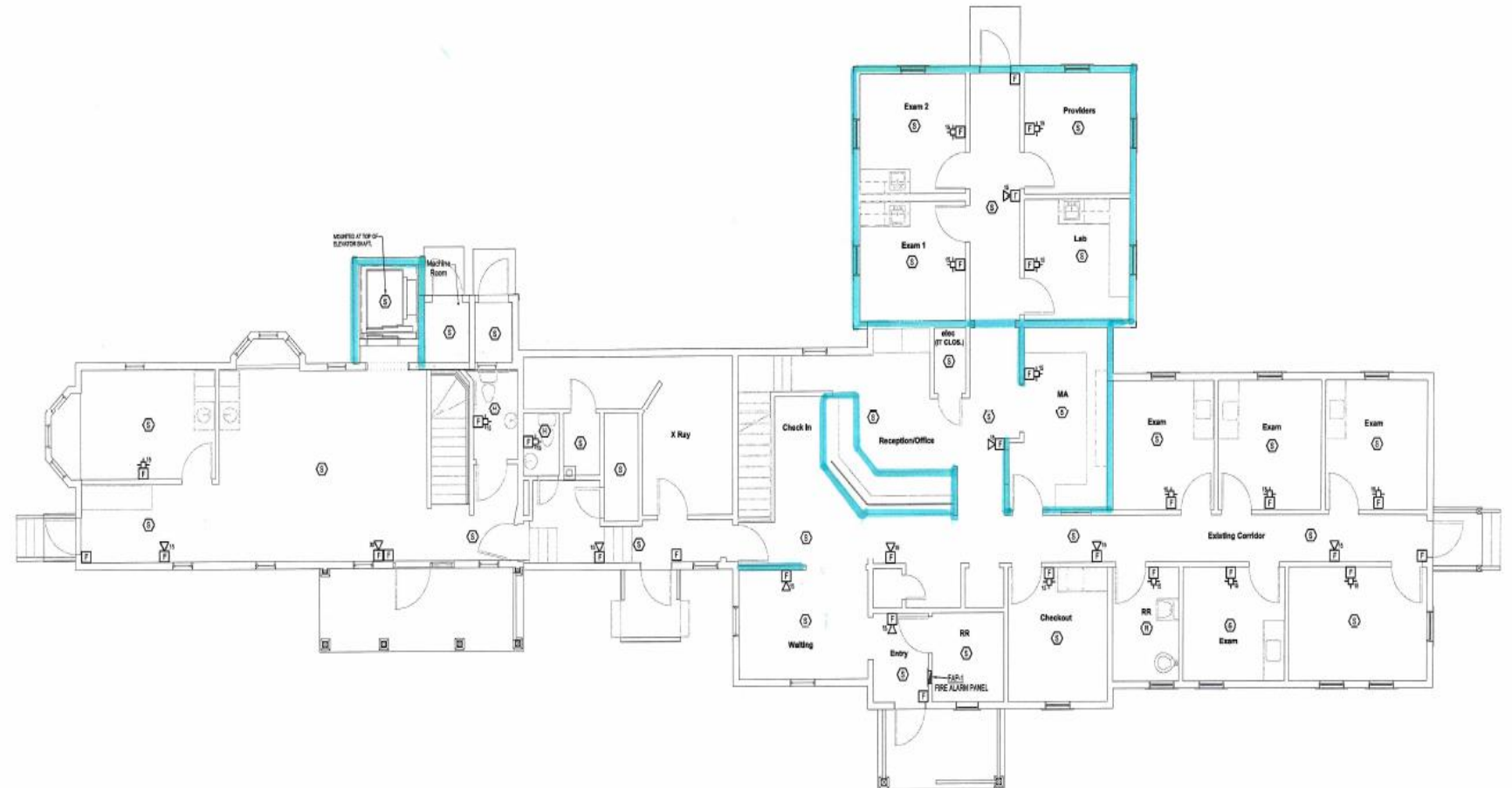
- We continue to be a strong organization in multiple facets – financial, patient experience, quality and operations. We focus on our employees to make sure they are happy and healthy in order to provide the best care to our patients and community.
- We have built a Rural Health Network called the Huggins Community Health Network. This group has come together to address health and social needs in Southern Carroll County.
- We have implemented teleneurology and telestroke services within our ED and Med/Surg unit.
- We added primary care providers and expanded services/hours in multiple locations.
- We have new services including Lymphedema Treatment, Dry Needling, and more Massage Therapy in more locations.
- We have seen rapid growth requiring new/renovated space.



# FACILITY UPDATES to support GROWTH

## Moultonborough Family Medicine Addition

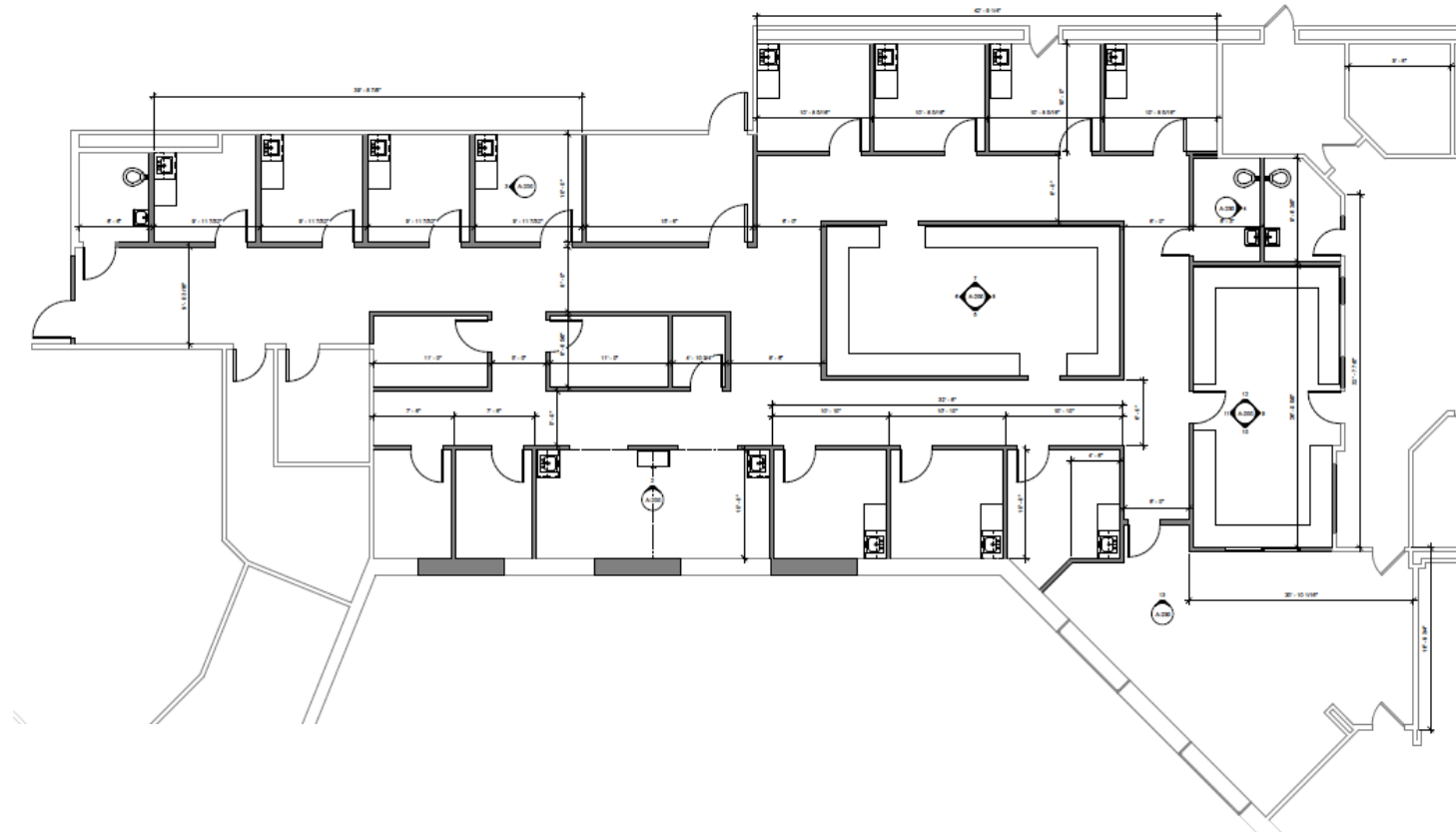
We added a 650 sq. ft. addition to meet the needs of adding a third provider. The expansion included 2 new exams, a provider office, a new lab, a new reception area and a refresh of the entire practice.



# FACILITY UPDATES to support GROWTH

## Orthopedic Suite at Huggins Hospital

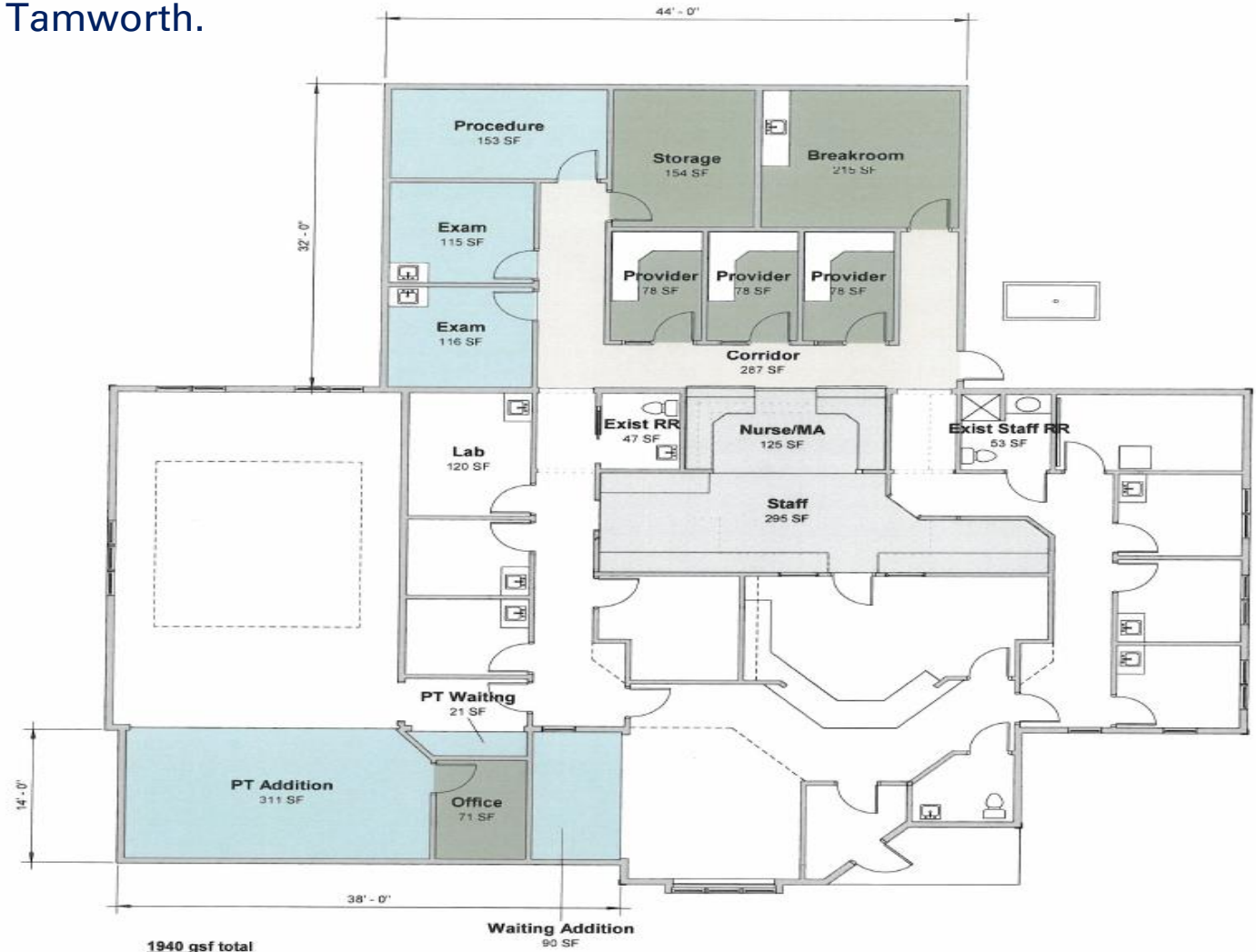
The new Orthopedic suite is well underway. It is being built adjacent to the current Women's Health and General Surgery suite and they will ultimately combine a new front door approach to our specialty services. The new suite will be able to support 3 providers with 11 new exams, X-ray, cast room and support space to meet anticipated growth.



# FACILITY UPDATES to support GROWTH

## Tamworth Family Medicine Addition

We are adding a third provider in Tamworth. This addition, along with a busy Physical Therapy program, creates a need for more space in Tamworth.



# New providers



**Paul DeMasi, DO**

*Internal Medicine  
Associates of  
Wolfeboro*



**Tuesday Renner, MD**

*Alton Family Medicine*



**Kyle Murray, MD**

*Ossipee Family  
Medicine*



**Matthew Jones, MD**

*General Surgery*

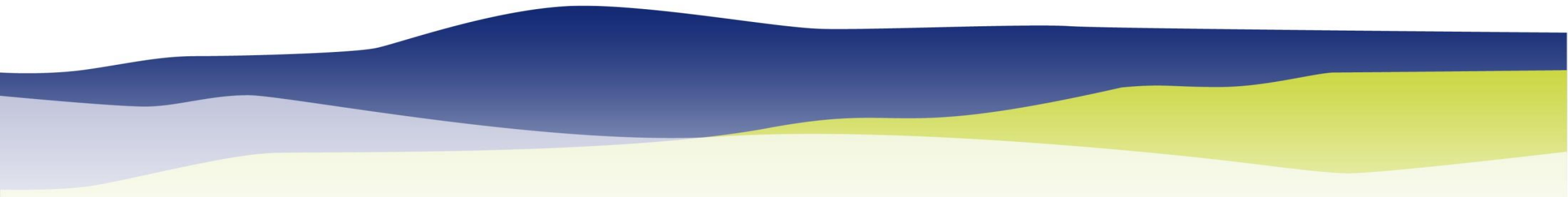


**Amanda Fucci, APRN**

*Alton Family Medicine*

# GraniteOne Health & Future

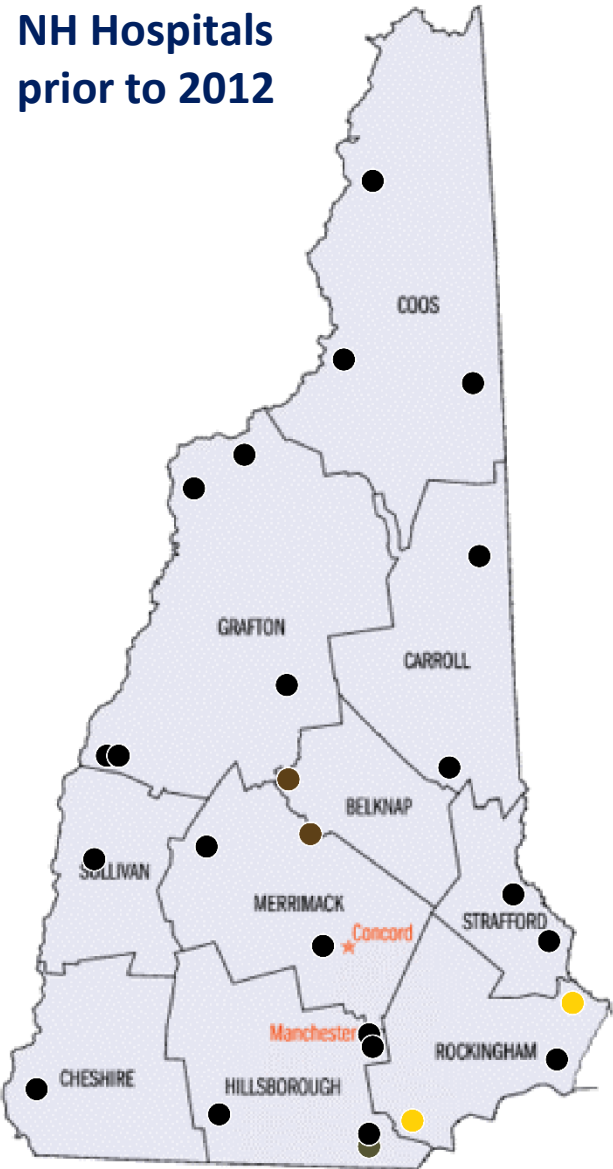
## Update



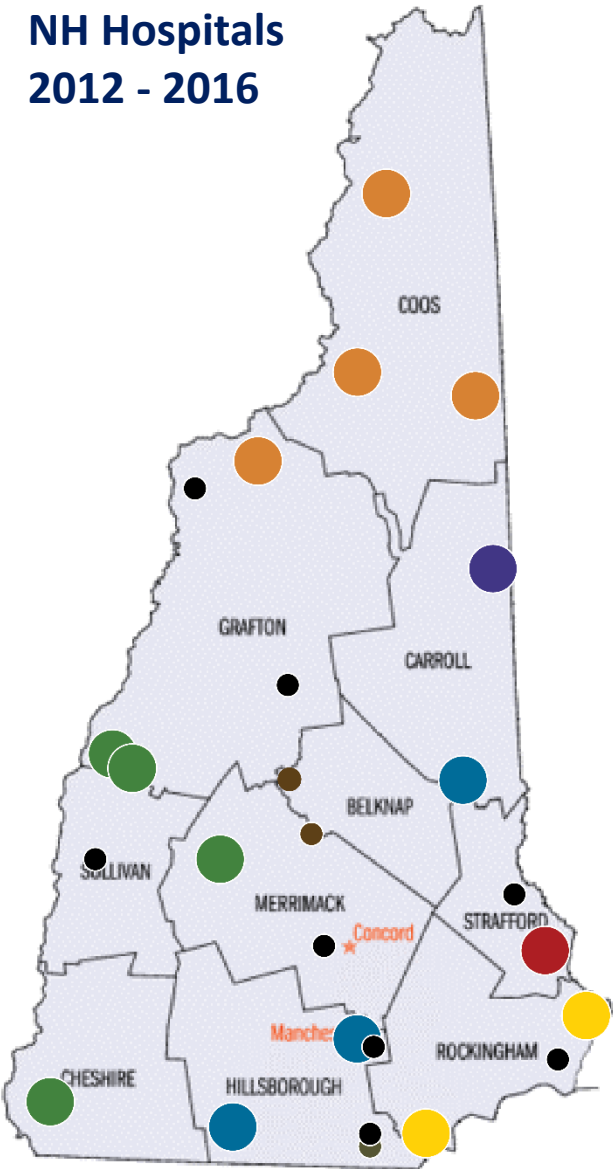


# Healthcare Landscape

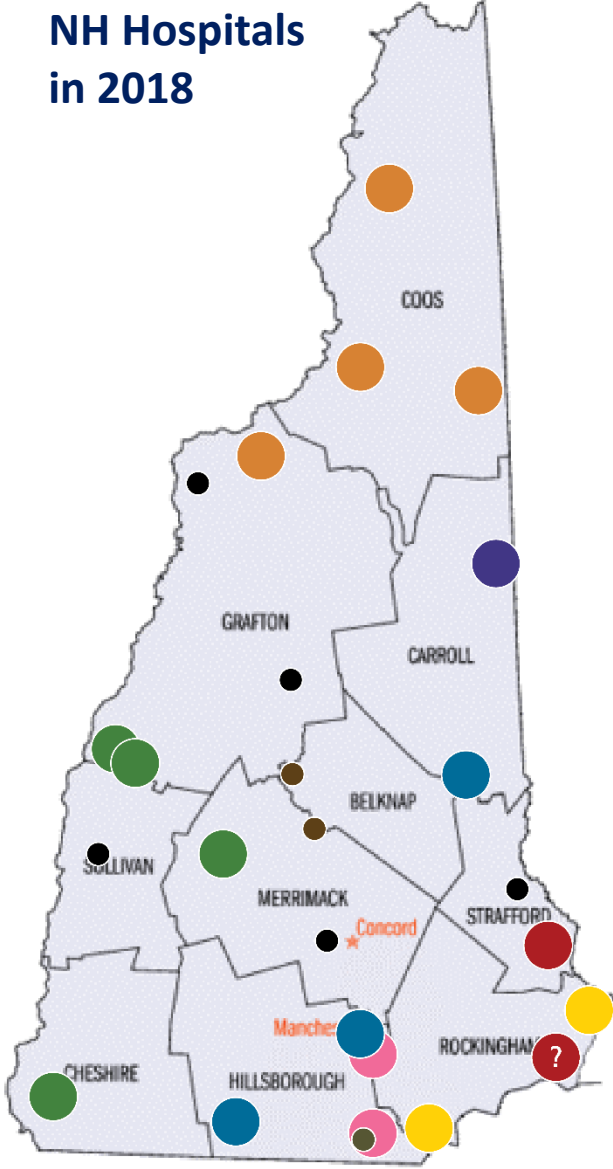
NH Hospitals  
prior to 2012



NH Hospitals  
2012 - 2016



NH Hospitals  
in 2018





**GraniteOne Health has signed a Letter of Intent (LOI) with Dartmouth-Hitchcock Health to explore how we could combine our systems.**

*Questions?*

# Financial Stability and the Social Determinants of Health



**Granite United Way**

C3PH Annual Meeting  
September 23, 2019

# Poverty as a Social Determinant

- ▶ Correlation to increased risk of child abuse/neglect
- ▶ Can disrupt children's brain development
- ▶ Linked to increased blood pressure
- ▶ View as a public health issue



Granite United Way

# Federal Reserve study: the \$400 expense

- ▶ Could you withstand a \$400 unexpected expense without having to borrow?
- ▶ 40% said No.



Granite United Way

# Cost of unexpected car repair

COST INFORMATION	EMERGENCY SAVINGS	CREDIT CARD	PAYDAY LOAN
Amount needed	\$350	\$350	\$350
Annual Percentage Rate (APR)	None	15.99 percent APR	\$15 for every \$100 borrowed for 14 days—equals a 391 percent APR
Repayment terms	You can decide when you rebuild your savings	Must pay at least a certain amount each month—for this example, we're using a fixed monthly payment of \$25	Must pay back loan amount (\$350) plus fee (\$52.50) within 14 days
Time to repay	None	16 months	14 days
Total interest and fees	\$0	\$40 over 16 months	52.50 for every 14-day loan
Total cost of car repair	\$350	\$390	\$402.50

# The Earned Income Tax Credit

- Support for low-income workers
- Lift out of poverty
- Can mean as much as \$6,557 for a family of 4+
- One-in-five do not claim
- \$1.9 Million left unclaimed in Carroll County



# Table Exercise

- “How did you do your taxes last year?”
  - Uncle did them for me.
  - I went to H&R Block
  - I filed myself
  - I didn't file



**Granite United Way**

# Questions?

Cary Gladstone

603.625.6939 ext. 128

[Cary.Gladstone@graniteuw.org](mailto:Cary.Gladstone@graniteuw.org)



Granite United Way